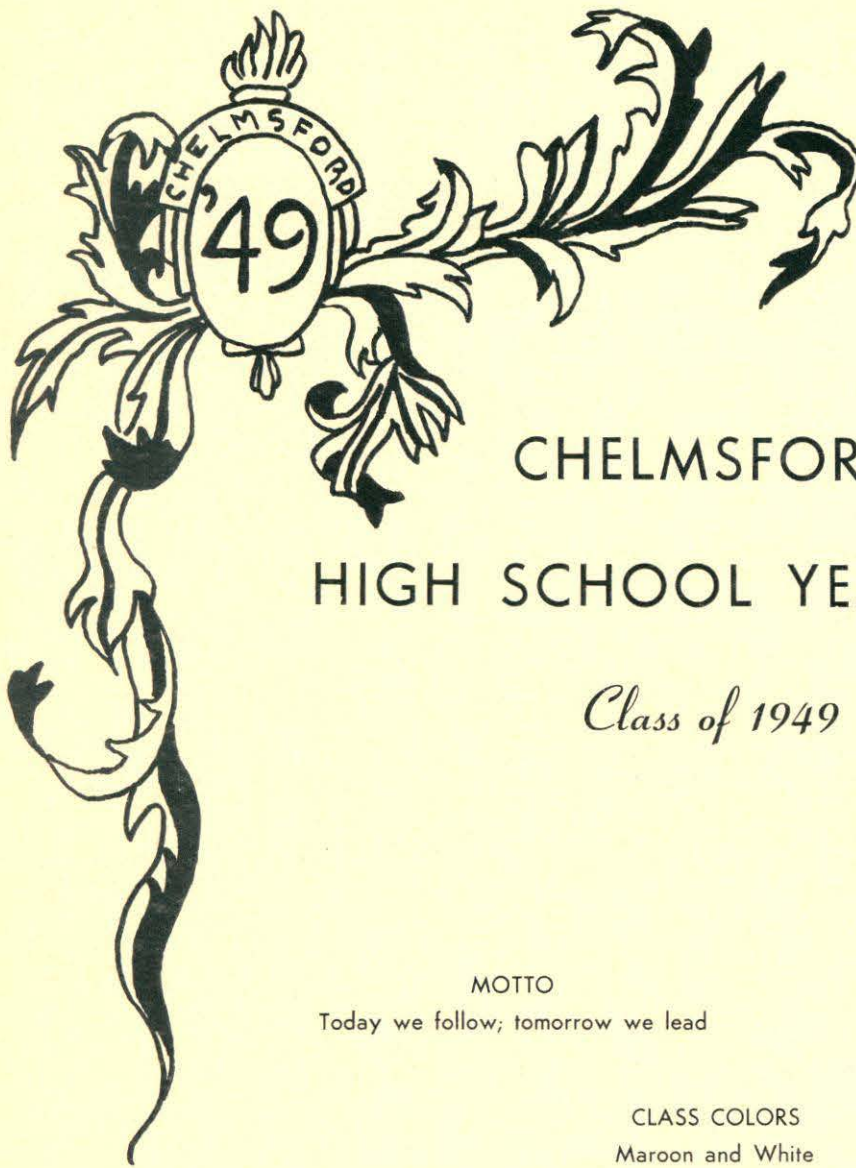


# THE YEARBOOK

1949

CHELMSFORD HIGH SCHOOL





CHELMSFORD  
HIGH SCHOOL YEARBOOK

*Class of 1949*

MOTTO

Today we follow; tomorrow we lead

CLASS COLORS

Maroon and White

CLASS FLOWER

Peony

CLASS ADVISERS

Marjorie B. Scoboria, John J. Shannon, Earl Joseph Watt

CHELMSFORD, MASSACHUSETTS

## *Editorial*

As graduation draws near, we find ourselves moved by many emotions, and sometimes the strongest seems to be fear. We, classmates of 1949, look back upon four sheltered years of school life. True, we have experienced our share of growing pains and lesser sorrows, but we have struggled for grades and school offices, not for college entrance, nor the severer competition of earning a livelihood in a dubious, disunited, atom-terrified world. We do not like the idea of being on our own, of being emancipated from classroom rivalries and romances, from cheering for the team, from proms and rallies—from all the tender nonsense of school days. Sometimes indeed we are afraid.

But out of our fear there grows an assurance. We are comforted in the knowledge that, while we can never relive the days of our youth, they go with us in memory. Let us rather say we take them with us for props, that we may not fail our teachers or ourselves. We shall have need of being liberal in our enthusiasms and right in our decisions. In our strong groundwork of memory and precept lies our hope and our assurance for this Class of 1949.





## *Board of Editors*

We offer this edition of the Chelmsford High School Yearbook to our readers with the sincere wish that it will always serve as a reminder of cherished schoolday memories. As the members of our class advance in the world of tomorrow, may these pages recall with affection the teachers, classmates, and friends of our youth!

James Buzzell  
Marilyn Clough  
Dorothy Cummings  
Lincoln Dexter  
Charles Hayward  
Concetta Leo

Joyce Mann  
Ann Mills  
Phyllis Palmgren  
Louise Peverill  
Doris Staveley  
Charles Wright

*Literary Adviser* — CHARLOTTE S. CARRIEL

*Business Advisers* — C. EDITH MCCARTHY — ERNESTINE MAYNARD



## *Class Ode*

Today we follow and obey  
The ones who guide and lead the way,  
For we are young and so we must  
Our cares on stronger shoulders thrust.  
But still the foremost aim in life  
Is our success in daily strife,  
Then we can overcome our need  
Of guides, and will tomorrow lead.

### CLASS ODE COMMITTEE

DORIS BEAUSOLEIL, *chairman*

ANN MILLS

RICHARD HAYWARD

HAROLD LEBRUN



TO  
MARJORIE B. SCOBORIA  
*Teacher of informal classroom manner*  
*Advisor of unfailing helpfulness*  
*Friend of profound understanding*  
*we, the Class of 1949,*  
*dedicate this,*  
*our Yearbook.*

Sixty seconds make a minute, tiny little things, and yet they form the months and years that speed on lightning wings. Most people want to do big things, and for that chance they wait, but years pile up, and soon they find alas! it is too late. . .

I hope, my friends, you'll never try to do some big things "by and by." The chance may never come. It is the little things that mount and make a right big sum. In living out your life you'll find that little things are all you do. So do them gently, with a smile, and doing so, make life worth while.—A. Alfred Taylor.





H. MORTON JEFFORDS  
*Superintendent of Schools*

"The school should always be a school on a hill. Out of the valleys into which the light of the sun shines dimly come boys, and girls, and young people up where the sun shines brighter. There they learn how to live according to finer designs. There they learn to want to live according to finer designs. There they form habits of living according to finer designs. Each evening they carry part of this light back into the valley, slowly but surely transforming it. This change in the community itself becomes an index of the effectiveness of the school."

PAUL R. MORT





LUCIAN H. BURNS

*Principal of Chelmsford High School*

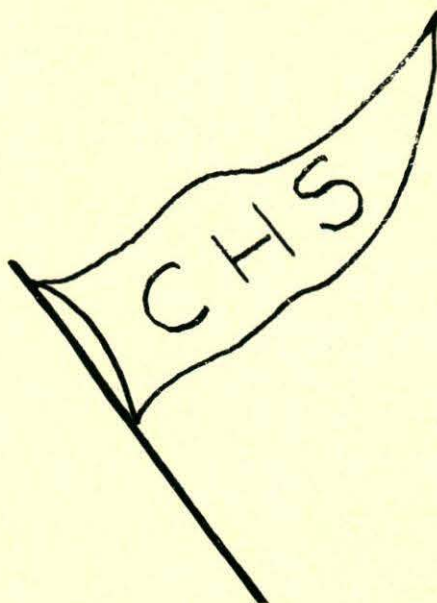
"Education must stand for liberty to exercise the rights God has given us, otherwise it will yield to tyranny. The truest education produces a self-disciplined individual, recognizing the existence of a personal God to whom he will one day be accountable."

—KELLER

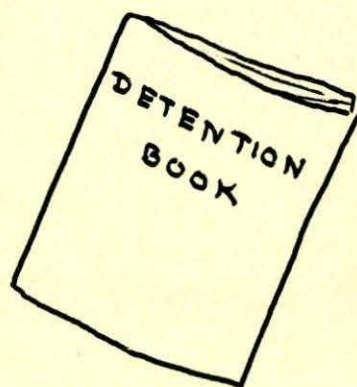
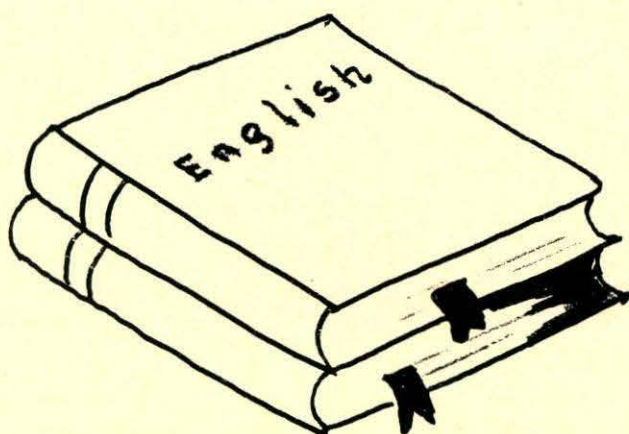








# Faculties



dfc





C. EDITH MCCARTHY, B.S.Ed.  
Vice-Principal  
*Bookkeeping, Typewriting*  
Salem Teachers College



F. CHRISTINE BOOTH, A.B.  
*Latin, History*  
Colby College



DAISY B. MACBRAYNE, B.S.Ed.,  
A.B., A.M.  
*English*  
Boston University



ERNESTINE MAYNARD, B.S.Ed.  
*Stenography, Typewriting*  
Salem Teachers College



EARL JOSEPH WATT, A.B., A.M.  
*French*  
Harvard



HELEN R. POLAND, A.B.  
*Science, Biology*  
Boston University



CHARLOTTE S. CARRIEL, A.B.  
*English*  
Mount Holyoke College



MILDRED M. HEHIR, A.B.  
*English*  
Regis College



JOHN J. SHANNON, A.B., A.M.  
*History*  
Clark University





MURRAY B. HICKS, B.S.  
*Science, Mathematics*  
Massachusetts State College



WILLIAM P. CALLAGY, A.B.  
*Social Studies, Mathematics*  
Dartmouth College



A. T. CAMPBELL, B.A., M.E.  
*Social Studies*  
University of New Hampshire  
Boston University



SHIRLEY H. EMMONS, B.S.Com.Ed.  
*Typewriting, J. B. T.*  
Boston University



BERNIE LARKIN  
*Band Instructor*



MARGARET E. KEITH, B.S.  
*Director of Girls' Physical Education*  
Sargent College. B. U.



OLIVE LITTLEHALE, B.S.Ed.  
*Music Supervisor*  
Lowell State Teachers College

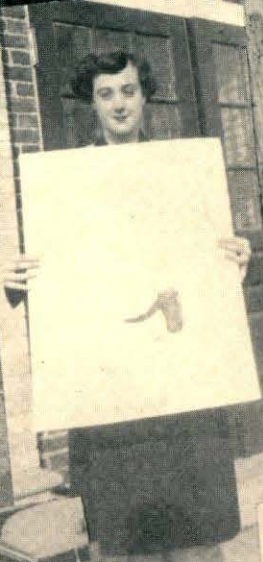


JOSEPH P. NOLAN, B.S.  
*Director of Boys, Physical Education*  
Canisius College  
Boston University

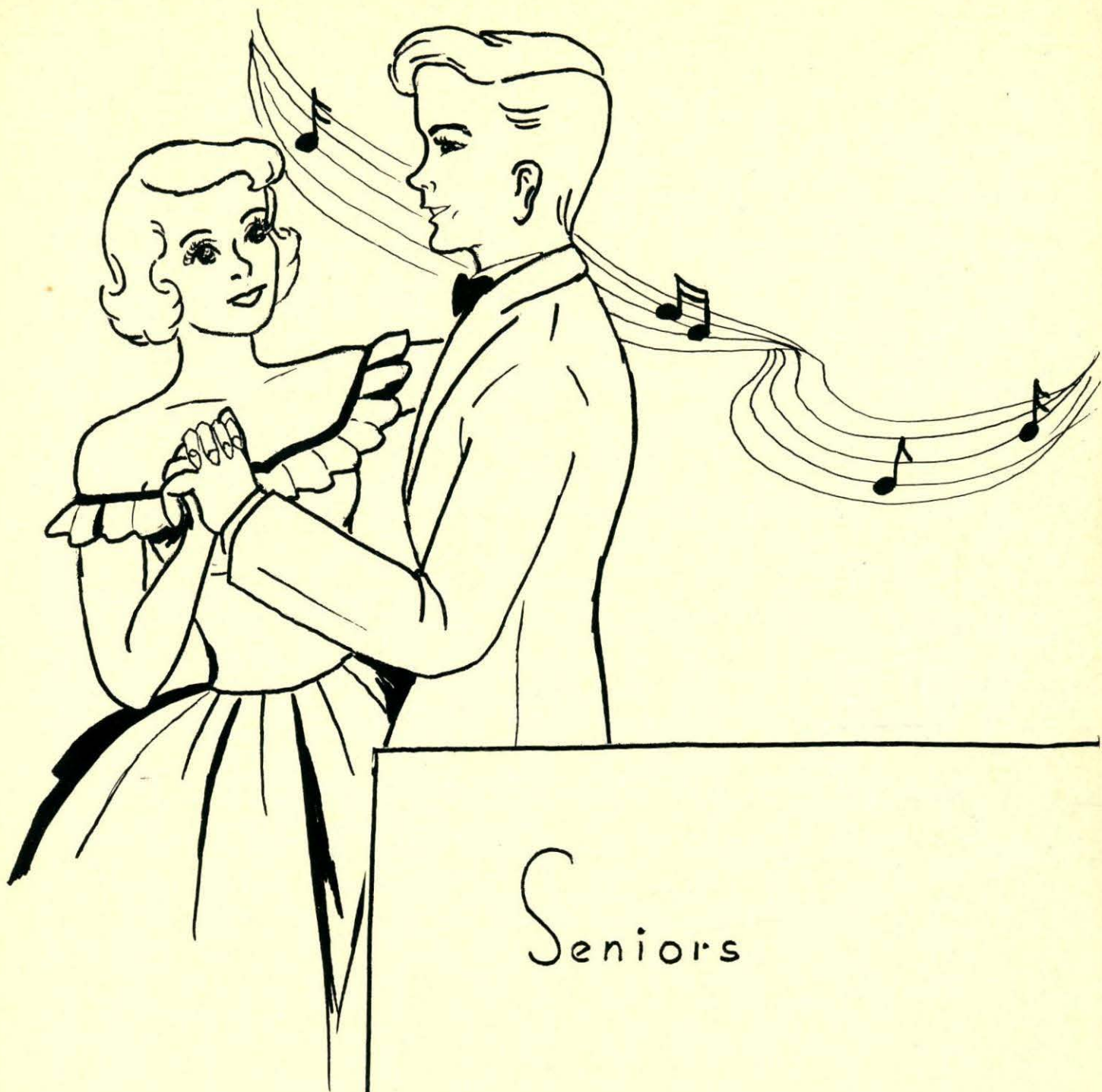


CHRISTINA S. PARK  
*Nurse*  
Lowell General Hospital  
New York Polyclinic

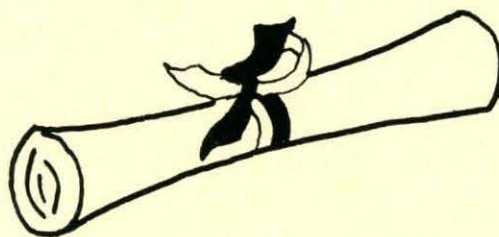
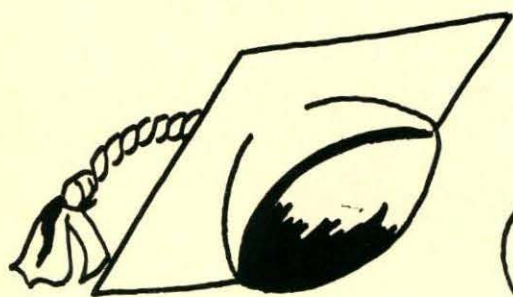








Seniors







# DORIS-RUBY STAVELEY

27 Jordan St.

West Chelmsford

## CLASS PRESIDENT

Graduation Speaker	Yearbook Staff
Junior Red Cross '45, '46, '47, '48	Latin Club '46
Junior Dance Committee	Graduation and Reception Usher '48
Senior Class Play	A. A. Member '46, '47
Junior Assembly	Ways and Means Committee '48

Beauty and the brain—"Feel my pulse, nurse"—peaches and cream complexion—loves French—bubbles with enthusiasm—sweetheart and leading lady of the "forty-niners"—peppy and pleasing president.



# LINCOLN ROBERT DEXTER

6 School Street

West Chelmsford

## CLASS VICE PRESIDENT

Honor Rank	Motto Committee
Ring Committee, Chairman	Yearbook Staff
A. A. Member '45, '46	

"Linc"—handsome roofer from West—clever quips—mature outlook—work dodger—that innocent look concealeth much—rates a successful and popular future.



# CONCETTA LEO

163 Main Street

West Chelmsford

## CLASS SECRETARY

Honor Rank	Yearbook Staff
Intramural Basketball '47	Graduation and Reception Usher '48
Cheerleader '48	Junior Red Cross '45, '46, '47, '48
Ways and Means Committee '48	

Short 'n sweet—Betty's partner in crime—keen observer of people—mischievous grin—quieter than the proverbial mouse, at *first!*—shiny black hair and melting, chocolate brown eyes.



# JOYCE ELIZABETH MANN

22 Steadman Street

Westlands

## CLASS TREASURER

Graduation Speaker <sup>1</sup>	Yearbook Staff
Glee Club '47	Junior Assembly '48
Glee Club Concert '47	Graduation and Reception Usher '48
Basketball Manager '48, '49	D. A. R. Representative

The perfect lady—accomplished and versatile—casually accepts duties of basketball manager, assembly pianist, office clerk, and class officer, along with her scholastic achievements—poised, witty, clever—none-such.



# DORIS MYRTLE ADAMS

77 Turnpike Road

Chelmsford Center

Junior Red Cross '45, '46

Christmas Concert '45

Intramural Basketball '46

Basketball '49

A. A. Member '45, '46, '47

Often seen driving a coupé—Chris's chum—"My brother Artie"—good math student—rabbit raiser—last to arrive each morning—foul shots in basketball—may the best await her.



# BARBARA ANN BARROWS

65 Princeton Blvd.

North Chelmsford

A. A. Member '46, '47, '48

Glee Club '46, '47, '48

Basketball '49

Senior Dance Committee '49

Intramural Basketball '46

Glee Club Concert '47, '48, '49

Tall and friendly—always catching up on her work—school busses wait for no one—clear complexion—agreeable and sunny disposition—should grace the business world.



# DORIS MAE BEAUSOLEIL

50 Littleton Road

Chelmsford Center

A. A. Member '46, '47, '48

Senior Dance Committee

Glee Club '47, '48, '49

Senior Party Committee

Glee Club Concerts '47, '48, '49

Senior Play

Dark blue eyes—cheerful smile—weakness for being late—fondness for the latest in shoes and sweaters—dancing feet—aversion to economics—flair for organizing.



# EDWARD JOSEPH BISHOP

182 Princeton Street

North Chelmsford

Football '47, '48

Baseball '46, '47, '48, Capt. '49

All Suburban Fullback '48

Baseball All Star Team '48

McCormack Trophy '48 (Football)

Junior Class Treasurer

A. A. Member '45

Social Events Committee

Junior Red Cross '47, '48

Dynamite on the gridiron and sparkplug on the diamond—a gentleman and an optimist—first love, baseball—always knows the reason and always proves his point—easy marks—"Go West (lands), young man!"







# MAUREEN LOUISE BISHOP

195 Riverneck Road

Chelmsford Center

Basketball '46, '48, Co-Capt. '49

Senior Play

Junior Red Cross '46, '47, '48, '49

Senior Dance Committee

A. A. Member '46, '47

Junior Dance Committee

Glee Club and Concerts '47, '48, '49

Softball '47

Intramural Basketball '47

Latin Club '46

Good things in small packages? Argument refuted!—daily grind at the Old Mill House—teases the history teacher—loquacious, jovial, and popular—basketball leader—beautiful complexion and unparalleled disposition.



# MARGARET LOUISE BLOTT

41 Highland Avenue

North Chelmsford

Basketball '49

A. A. Member '46, '47

Intramural Basketball '46, '47

Junior Red Cross Vice President '47

Junior Dance Committee

Sparkles when she smiles—loves to dance—cheery optimist—more than one string to her bow—Margie's shadow—basketball find—rouge? No, it's natural!



# EDWARD ANTHONY BUONOPANE

11 C Street

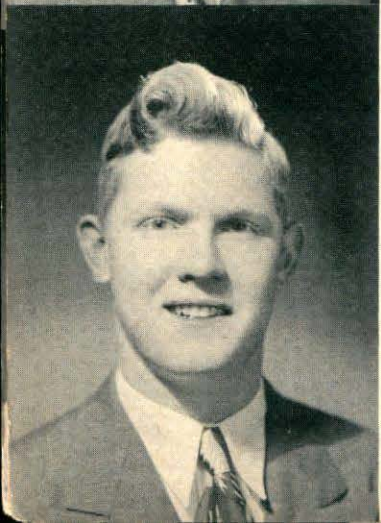
Westlands

Football '48

Senior Dance Committee

A. A. Member '45, '46, '47

Always a pal—never gripes—"Can we get any girls?"—"me and my shotgun"—determined football player—well-balanced make-up—should commercialize on his personality appeal.



# JAMES CHANDLER BUZZELL, JR.

79 Dalton Road

Chelmsford Center

Graduation Speaker

Yearbook Staff

Football '46, '47, '48

Senior Play

Class President Junior Year

Glee Club Concert

Junior Assembly

Senior Dance Committee

Big and gentle Jim—natural actor—top-ranking male senior—attends all school dances—girls keep hoping—modest about his successes—our admiration goes to this scholar, athlete, and—politician—whatta man!



### JOHN PATRICK CAMPBELL

80 Middlesex St.

North Chelmsford

Football '45, '46, '47, Capt. '48

Baseball All Star Team '48

Baseball '47, '48, '49

A. A. Member '45, '46

McCormack Trophy (Football) '48

Bruce—bashful, good-natured he-man—"Hey, anybody got an extra pencil?"—Oh, that Harvard clip!—dual star of football and baseball—future Golden Glover—captained the team "out of the bottom of the barrel."



### DIANA THERESE CANTWELL

16 Oak Knoll Avenue

East Chelmsford

Intramural Basketball '49

Welcomed from Connecticut—quiet, pleasing manner—saves her humor for her friends—letters and accent connect her with the past—movie fan—likes Chelmsford, vice versa.



### MARJORIE ANN CARR

24 Sunset Avenue

Westlands

Cheerleader '48

Senior Dance Committee

Intramural Basketball '46, '47

President, Junior Red Cross '47

Junior Dance Committee

A. A. Member '46, '47

Glee Club Concert Usher '47

Cheers with vim and vigor—full of fun—dotes on her older sister—a tease—collects college bulletins—"you have to care about these things, don't you, huh?"—a secret pal.



### CHARLES LUTHER CASHIN, JR.

84 High Street

Chelmsford Center

Senior Dance Committee '47, '48

A. A. Member '45, '46, '47

Senior Prom Usher '47

Camera man—chauffeur to after school gang—perpetually worried about chemistry—perfect manners—reliable, serviceable, and popular—privileged late arrival with school mail—a true gentleman.







# ELIZABETH ANN CLARK

Sharon Avenue

North Chelmsford

A. A. Member '45 '46 '47

Class Secretary '47

Intramural Basketball '46

Junior Dance Committee '47

Softball '46

Christmas Party Committee '48

Betty—oh, that smile—confides troubles to Mr. Shannon—Little Miss Mischievous—pin-up girl of room 33—most experienced girl detention sitter—clock watcher in period 5—has fun.



# MARILYN ANNE CLOUGH

9 Dartmouth Street

North Chelmsford

Graduation Speaker

Senior Dance Committee

Class Marshall '48

Junior Assembly

Basketball '47 '48 '49

Senior Play

A. A. Member '45 '46 '47

Junior Red Cross '45 '46 '47 '48

Junior Dance Committee

Yearbook Staff

Cloughie—"Oh, for the love of Mike!"—locker room belle—charming personality—joyful and unquenchable animation—work and plays with equal gusto—an inexhaustible source of ingenious ideas.



# PHYLLIS LOUISE COLBY

23 Gay Street

North Chelmsford

A. A. Member '45 '46 '47

Glee Club Concerts '46 '47 '48

Intramural Basketball '46

Christmas Party Committee '48

Unpredictable—reliable baby sitter—charter member of North's Teen Canteen—loyal basketball rooter—film connoisseur—pet aversion, gym!—future organizer—definite ideas.



# MURIEL FERN COLE

42 Woodbine Street

Westlands

Cheerleader '47 '48

Junior Dance Committee

A.A. Member '45 '46 '48

Senior Dance Committee

Intramural Basketball '46

Junior Red Cross '45 '46 '47 '48

Glee Club '47 '48 '49

Softball

Glee Club Concerts '47 '48 '49

Charming dimples—has quite a following—popularity plus—persuasive ticket-seller—loves a good time—sparkling personality—easy to get along with—attraction for the Navy.



# VIRGINIA LEE CROWELL

17 Tyngsboro Road

North Chelmsford

A. A. Member '45, '46, '47

Softball '46

Intramural Basketball '46, '48

Glee Club Concerts '47, '48

Easy does it—snappy member of "Roxy Rockettes"—lots of spare time for roller skating—never gets excited, not even about homework—enjoys teasing Buzzell—never troubles trouble.



# DOROTHY FRANCES CUMMINGS

10 Third Street

Chelmsford Center

A. A. Member '45, '46, '47, '48

Glee Club '46

Glee Club Concert '46

Year Book Staff

"Dot"—neat dresser—dry humor—roots for Concord—pizza, um—that Hampton vacation—proven capabilities in office practice—whiz on a typewriter—agreeable and willing—ambition, bookkeeper.



# CHRISTINE ANN CURRAN

997 Princeton Street

North Chelmsford

A. A. Member '45, '46

Intramural Basketball '46, '48

Chris—always ready with a helping hand—Miss from City Line—seen but never heard—faithful and modest perseverance—enjoys life in her own quiet way.



# NANCY JOYCE CURTIS

14 Worthen Street

Chelmsford Center

Jr. Red Cross '45, '46, '47, President '48

Glee Club '47, '48

Cheerleader '48

Intramural Basketball '46, '47

Jr. Dance Committee

Softball '46

Ann's sidekick—a whiz on the dance floor—good sense of humor—"Oh, Mr. Shannon;"—constantly chewing and chatting—dresses well—victim of movie habit—cows and milk routes her hobby.







### WALTER HERBERT DINNIGAN

7 Ripley Street

North Chelmsford

Baseball '48, '49

Band '45, '46, '47, '48

Annual Band Concerts '46, '47, '48

A. A. Member '45

Sr. Dance Committee

Jr. Red Cross '46

Intramural Basketball '47

One of Bernie's boys—constant smile—baseball enthusiast—dependable, friendly, and quiet—basketball at "Y"—aspires to be a printer.



### JOYCE AUDREY DRYDEN

34 Proctor Road

South Chelmsford

Basketball '46, '47, '48, '49

A. A. Member '45, '46, '47

Jr. Dance Committee

Sr. Dance Committee

Jr. Red Cross '45, '46, '47, '48

Softball '47

Belle of the South—monopolizes the party line—dead-eye on the dribble court—forever shearing her locks—daily notes to George—competent seamstress—promising future.



### PHYLLIS ARLINE DUPEE

35 Holt Street

North Chelmsford

Honor Rank

Latin Club '46

Jr. Red Cross '45, '46, '47, '48

Glee Club '46, '47, '48

Junior Assembly

Graduation and Reception Usher

Senior Dance Committee

Senior Play

Glee Club Concerts '46, '47, '48

A. A. Member '45, '46

Foreign language student—enviable report card—really studies—regularly patronizes the lunchroom—cool, calm, and collected at all times—daughter of the D. A. R.



### ELIZABETH ROSS DURKEE

144 Gorham Street

East Chelmsford

Honor Rank

Graduation and Reception Usher '48

Latin Club '46

Glee Club and Concerts '46

A. A. Member '45, '46, '47

Jr. Red Cross '45, '46, '47, '48

Intramural Basketball '48

Graduation Decoration Committee '48

Class Motto Committee

Devotee of the "new look"—four-year Latin prodigy—enjoys sports, especially basketball—college bound—says little, but listens well—boy shy—Nancy's inseparable pal.



CLAIRE ELIZABETH DUTTON

6 Groton Road

North Chelmsford

A. A. Member '45, '46

Glee Club '46

Glee Club Concert '46

Admires Spike Jones' music—"Oh my honey!"—timid and bashful—fails to expose her serious thoughts—morning chit-chat outside room 30—romantic interest in Tyngsboro—always laughing.



WILLIAM FREDERICK EDWARDS

Russell Road

North Chelmsford

Senior Dance Committee

Intramural Basketball '47

A. A. Member '45, '46, '47, '48

Mischief maker who seldom gets caught—marksman and hunter?—usually has a joke—cars—if he seems quiet at first—wait a minute!



PATRICK FRANCIS FLYNN

156 Dalton Road

Westlands

Christmas Play '48

Supply Clerk '49

Husky voice—direct and spontaneous manner—genial disposition—able distributor of supplies—experienced and informed in all phases of aviation—scientific interests—clicking heels—well-merited success.



LORRAINE RITA GADBOIS

82 Middlesex Street

North Chelmsford

A. A. Member '45, '46

Jr. Red Cross '45, '46, '47, '48

Glee Club '47, '48

Glee Club Concerts '47, '48

Senior Dance Committee

Seasoned gum chewer—enjoys life—favorite class, gym period 3—home study accompanied by television—letters have Alaskan seal (!)—rivals the best on the dance floor—willing and competent miss.







### ELIZABETH ANNE GANNON

11 Steadman Street

Westlands

Honor Rank

A. A. Member '46, '47, '48

Jr. Red Cross '46, '47, '48, '49

Jr. Dance Committee

Sr. Dance Committee

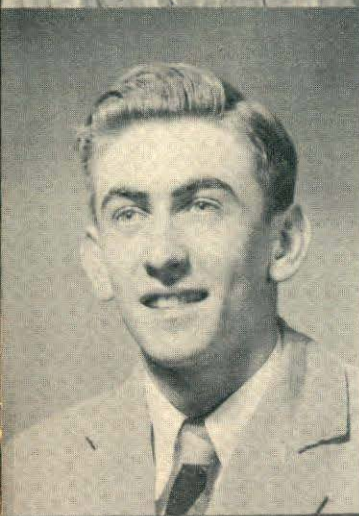
Graduation and Reception Usher '48

Basketball Manager '47, '48

Senior Play

Thanksgiving Assembly '46

Likeable and appealing—*not* Lizzy—allergic to changing seats in history—"When Irish eyes are smiling"—yearns to teach tiny *tots*—unaffected personality—superior record.



### ALBERT VICTOR GAUDETTE

4 Lakeview Street

North Chelmsford

Class Ring Committee

Jr. Red Cross

A. A. Member '45, '46

After school florist—sharp dresser—drives car with chronic ailments—never at loss for a joke—kangaroo boy—what's so nice about a back seat in history?—candid cameraman.



### RAYMOND HENRY GIBBONS

59 Harding Street

North Chelmsford

Jr. Red Cross '45, '46, '47, '48

Junior Dance Committee

A. A. Member '45, '46, '47

Christmas Play '48

Glee Club '48

Operetta '48

"Shock"—Crystal Lake Gallahad—avid hunter—quiet, but keen to argue and quick to laugh—boyish grin and freckles—teller of poor jokes—questions rules of grammar.



### THERESA ANN GONSALVES

221 Carlisle Street

East Chelmsford

Glee Club '48

Glee Club Concert '48

A wee, small voice—quietest member of period 5 math—nose perpetually in an exciting book—sweet, shy, and modest—dark eyes—contented outlook—innocence abroad.



# CONSTANCE ANN GREENWOOD

23 Fletcher Street

Chelmsford Center

Basketball '46, '47, '48, Co-Capt. '49

Softball '46, '47

Jr. Red Cross '46, '47, '48, '49

Senior Dance Committee

Glee Club '47, '48, '49 Secretary

A. A. Member '45, '46, '47

Latin Club '47

Glee Club Concerts '46, '47, '48

Junior Dance Committee

Never dejected and never cross—prefers Studebakers—*really* permanent wave—quiet and unruffled—one hand push shots—study in double quick motion on the court—worthwhile future plans.



# JOHN LEONARD GUINEY

194 Chelmsford Street

Westlands

Football '47, '48

Jr. Red Cross

A. A. Member '45, '46

Senior Dance Committee

Chronic practical joker—variable temperament—boy with the green coupé—once fancied *he* could hide behind a piano—will have to settle down and plan his career.



# RICHARD FRANCIS HADLEY, Jr.

35 Golden Cove Road

Chelmsford Center

A. A. Member '45, '46

Glee Club Concerts '45, '46, '47

Junior Dance Committee

Senior Dance Committee

Christmas Play '48

Winning smile and cheerful countenance—dark eyes and secrets—star in church basketball league—delights in many sports, jokes, too—a good loyal friend.



# RUTH MARIE HAMEL

33 Sylvan Avenue

Westlands

Glee Club '48, '49

Jr. Red Cross '47, '48

A. A. Member '45, '46

Glee Club Concert '48

Petite funster—up with the birds at 5:45 A. M. for early breakfast—Old Timers' Dances—inveterate hair comber—busses to school and LaSalles it home—spends most of her time with you-know-*who*.







## ELIZABETH HARDY

23 Acton Road

Chelmsford Center

Honor Rank

Glee Club '47, '48, '49

Graduation and Reception Usher '48

Senior Play

Glee Club Concerts '47, '48, '49

Senior Dance Committee

A. A. Member '45, '46, '47, '48

Always a lady—never without a date—"It's so mussy!!"—dashes about with notices—has her troubles—allergic to economics—perfect poise—lovely soprano—smart, modern appearance.



## MARIE PHYLLIS HAYES

18 Stearns Street

East Chelmsford

A. A. Member '46

Intramural Basketball '46, '47, '48

Jr. Red Cross '45, '46, '47, '48

Softball '47

"I'm broke, Theresa, how about it?" hubba, hubba sweater-wise cracks—fond of *Ice Follies*—exempt from worry, on the surface—Woolworth's lunch counter—intent on using her business training.



## THERESA ANNIE HAYES

18 Stearns Street

East Chelmsford

Glee Club '48

A. A. Member '46

Glee Club Concert '48

The other Hayes girl—Marie's opposite—gets rich minding children—always forgets notes—gives sound, sisterly advice—naturally wavy hair and easy manner—deserves the best.



## CHARLES RICHARD HAYWARD

15 Stedman Street

Westlands

Graduation Speaker

Football '46, '47, '48

Basketball J. V. '47

Basketball '48, '49

Senior Play

Yearbook Staff

Senior Social Committee

Coaches church basketball teams—teacher's pet—"Bessie"—occupies special seat in Mr. Shannon's classes—5 fouls—Sweater Boy—will wrestle any comer in Room 21—great friend.



### IRENE JANE HULSLANDER

109 Tyngsboro Road—

North Chelmsford

Senior Dance Committee

A. A. Member '45, '46, '47

Intramural Basketball '48

Junior Red Cross '45

Enjoys dancing at St. Anne's—faithful Rainbow Girl—neat, sweet, and very nice—plays basketball down at the "Y"—amiable disposition—ardent football fan—best dressed hick at Hick-Hop.



### MARGARET ANN JENKINS

5 Park Avenue

Chelmsford Center

Honor Rank

Glee Club and Concerts '46, '47, '48

Senior Music Committee '48

Softball Manager '47

Basketball Manager '49

Jr. Red Cross Representative '48

Ring Committee

A. A. Member '45, '46, '47

Jr. Red Cross '45, '46, '47, '48

Graduation Reception Usher '48

Loves the sandman—happy disposition and contagious giggle—faithful basketball manager—capable and independent—activity minded—excitable but a good sport.



### CHESTER KELLY

34 Turnpike Road

Chelmsford Center

Football '47, '48

Jr. Red Cross

A. A. Member '45, '46

Senior Dance Committee

Ladies' man—fighting Irishman—best one-arm driver in Chelmsford—tall, blond, and handsome—"Did we have any English home-guard, huh?"—ambitions? only to see the world.



### NANCY VEE LAMB

155 Chelmsford Street

Chelmsford Center

Basketball '46, '47, Co-Capt. '48, '49

Senior Play

Jr. Dance Committee

Jr. Red Cross '45, '46, '47, '48

A. A. Member '45, '46

Softball '46, '47

"Nan"—a sprightly redhead, but never redheaded—a fighting guard with the real sporting spirit—proud driver of the "Flying Char-iot," new Hudson, that is—charms her listeners—atomic energy.







# RONALD EDWARD LEACH

197 Main Street

West Chelmsford

Jr. Red Cross '47, '48, '49

Glee Club '48, '49

A. A. Member '46, '47

Intramural Basketball '47

Man of the world—church basketball star—plans to see the world with the Navy—large feminine acquaintance—Sunny disposition—one of the angels in room 17.



# HAROLD ERNEST LEBRUN

58 Smith Avenue

Westlands

Band '45

Jr. Red Cross '45, '46

Senior Dance Committee

A. A. Member '45

Glee Club Concert '45

March of Dimes Concert '45

One among many—giggles and doodles—good-natured man—willing errand boy—drummer for St. Anne's—double duty at the Giant Store and Purity market—plays tick-tack-toe in study hall—quiet personality.



# WARD HARMSTON LETTENEEY

16 Carleton Avenue

East Chelmsford

A. A. Member '45, '46, '47

Jr. Red Cross '45, '46, '47, '48

Senior Play

Senior Christmas Party

Intramural Basketball '47

"Spud"—Naval Reservist—runs the Allen—reckless eater of life savers—"You're my beth't girl"—hopes to return to Florida—fancy actor, by Jove!—"What a muddle."



# CLARK LIND

157 Dalton Road

Westlands

Junior Dance Committee

Senior Dance Committee

Intramural Basketball '47

Glee Club '48

A. A. Member '45, '46

Youthful fisherman—hamster raiser—motor-bike enthusiast—basketball participant at the "Y"—calm and composed—serious minded—tours northerly in a Ford—best of luck.



## RALPH DOUGLAS LOGAN

15 Grey Street

North Chelmsford

Jr. Red Cross '46, '47, '48

Intramural Basketball '47

A. A. Member '46, '47

Future plans for Navy—North church basketball star—likes to watch and play all sports—reserved and self-contained—the quiet type—seen at C. Y. O. dances.



## JOHN HENRY MARSHALL, Jr.

44 Warren Avenue

Chelmsford Center

Football '47, '48

Basketball '46, '47, '48

Intramural Basketball '45

A. A. Member '45

Senior Dance Committee

Junior Dance Committee

Jr. Red Cross '46

Senior Play

"Is she mad at me!"—dresses neatly—at home with a basketball—helpless without gestures—good Joe—that smile!—the girls keep trying, but he's tagged—rare flashes of seriousness.



## RITA MARIE McDONALD

7 Marshall Street

East Chelmsford

Cheerleader Sub-Captain '48

Glee Club '47, '48

Glee Club Concerts '47, '48

Senior Dance Committee

A. A. Member '47, '48, '49

"Swede"—happy-go-lucky—brother booster—brown-eyed cheerleader—snappy dancer—never without a date—creates her own wardrobe—his first name is Phil—Newberry's best.



## WARREN PAUL McHUGH

134 Pine Hill Road

Chelmsford Center

Football '46, '47, '48

Baseball '47, '48

Basketball '46, '48, Capt. '49

Student Representative A. A.

Junior Class Vice-President

Representative Good Government Day

Animated spirit—his brother's keeper—"Cut it out, Marshall!"—McHugh to Hayward passes—has a smile that's a winner—considered boy most likely—general favorite.







### BEVERLY JEAN McMASTER

8 New Fletcher Street

Westlands

Band '47, '48

Band Concert '47

Sr. Dance Committee '48

A. A. Member '45, '46

Softball '47

"Mac"—verse writer—faithfully checks the faculty's diet—daily letters—prefers two-wheelers—carefree and encouraging friend—her ready wit and sunny disposition will carry her far.



### ARTHUR LORING MILLER

Washington Street

North Chelmsford

Intramural Basketball '47

A. A. Member '45, '46

Jr. Red Cross '46, '47, '48

Jr. Dance Committee

Jester of Room 20—alert, active, animated—drudges for spending money at John's market—red roses for a junior on their first anniversary—peruses daily eight page notes in Room 6—independent—"Tu--ba!"



### ANN SHERMAN MILLS

16 Westford Street

Chelmsford Center

Honor Rank

Cheerleader '47, '48

Glee Club and Concerts '46, '47, '48

Senior Play

Yearbook Staff

Jr. Red Cross '45, '46, '47, '48

Graduation and Reception Usher '48

A. A. Member '45, '46, '47

Senior Dance Committee

Intramural Basketball '47, '49

Naturally wavy hair—knows many good jokes—Room 20's attendance taker—plays a mean game of basketball—French sufferer—patronizes "Old Timers"—drives, license or not.



### WILLIAM ALAN MORGAN

111 Chelmsford Street

Chelmsford Center

Baseball Manager '46,

A. A. Member '45, '46

Jr. Red Cross '45, '46, '47, '48

Thanksgiving Assembly '48

Christmas Concert '48

J. V. Basketball '46

"Blubber"—camera fan—heap big hunter, trader, trapper—raises rabbits—favorite conveyance, motor scooter—gifted in talking around the subject—often subdued but not conquered—ya-ka-ta, ya-ka-ta.



# BARBARA ANN NADEAU

20 Olive Street

Lowell

Jr. Red Cross '45, '46, '47, '48

A. A. Member '45, '46

Gift of gab—a foreigner in our midst—alternates her daily ride with the Eastern Mass. and Mr. Callagy—dark hair and eyes—never forgets her ladylike charm—pleasant to remember.



# ROBERT DANIEL NICKLES

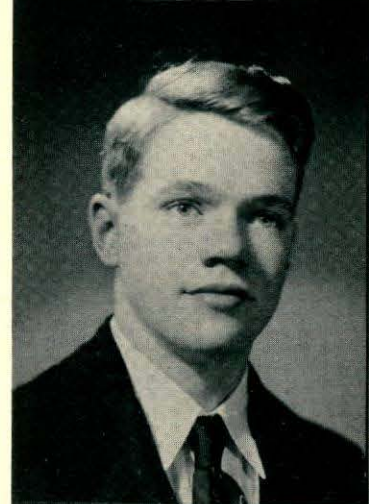
17 Coolidge Street

North Chelmsford

Baseball '49

Senior Play

"Big Wheel from Westford Academy"—inexhaustible supply of jokes—frequent run-ins with you-know-who—"Cruiser-phobia"—smooth talker—clever alibis—silent (?) member of Campbell, Bishop & Co.



# ELSA EDITH NILSSON

Wiede Street

North Chelmsford

Jr. Red Cross '45, '46, '47, '48

A. A. Member '45, '46, '47

Junior Dance Committee

Senior Dance Committee

Corny jokes—plays basketball at the "Y"—"Oh, gee!"—has to have that last minute talk with Irene before study period—favorite pastimes, skating and cooking—adapted to office work—sweet and sincere friend.



# ROBERT LOUIS NORTON

88 Littleton Road

Chelmsford Center

Basketball '46

Glee Club Concerts '47, '48

Junior Dance Committee '47

Junior Red Cross '45, '46, '47, '48

A. A. Member '45, '46

Admirer of Keith Hall girls—jazzy specialist at the piano—enjoys dancing and excels in singing—a pleasant smile and good word for all—"The mail must go through!"







# PHYLLIS ANN PALMGREN

21 Sunset Avenue

Westlands

Honor Rank	Cheerleader '47
Glee Club and Concerts '46, '47, '48	Senior Play
Yearbook Staff	Junior Red Cross '45, '46, '47, '48
Senior Dance Committee	Graduation and Reception Usher '48
A. A. Member '45, '46, '47	Intramural Basketball '47

Pretty clothes—likes the trumpet (er) as well as the piano—appreciates a good joke—happy-go-lucky—many friends and admirers—daintily up-to-date—asset to the office.



# EVELYN ELIZABETH PETTERSON

32 Carlisle Street

East Chelmsford

Glee Club '47	Junior Red Cross '45, '46, '47, '48
Glee Club Concert '47	A. A. Member '45
Latin Club '46	

Can't wait for period 5—blushes beautifully—plays piano and accordion—skilled in culinary arts—spirited and happy manner—chat-box—perseveres in her desire to teach.



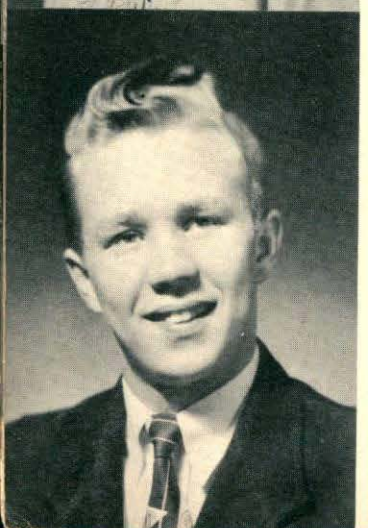
# LOUISE ETHEL PEVERILL

67 Dunstable Road

North Chelmsford

Junior Red Cross '45, '46, '47, '48	Newswriting Group '46
Yearbook Staff	Glee Club '46, '47, '48
Glee Club Concert '46, '47, '48	

Dexterous digits, skillful at typewriter and at piano—loves to giggle—roseate complexion—regular letters from the land of tulips and wooden shoes—a sweet girl.



# ROGER ARTHUR PIHL

124 Dalton Road

Westlands

Basketball '48	Football '45
A. A. Member '46	Senior Dance Committee
Junior Red Cross '45	

Sophisticated ideas, boy at heart—fashionable clothes—ducks the issue—pals, galore—sports and socials attendant—delays serious plans—we've enjoyed him—ardent DeMolay member.



# RITA BEATRICE POPE

20 Stearns Street

East Chelmsford

A. A. Member '45, '46

Junior Red Cross '45, '46, '47, '48

Sweet disposition—fancies high heels—assists Barbara in short-hand—loves pretty clothes—tall, blond, and poised—sweet sophistication—extensive vocabulary and a radiant smile.



# DONALD LEE REID

30 Steadman Street

Westlands

Football '47, '48

Senior Play

Junior Dance Committee

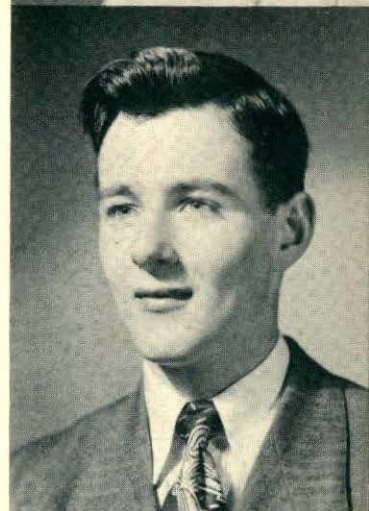
Senior Dance Committee

A. A. Member '45, '46

Intramural Basketball '47

Glee Club Concert

Ladies' man—Church League high scorer—snowed under by Math 2A—quick recovery—through the night streaked a long green Buick—several interests, romance included.



# HAZEL FRANCES ROSE

123 Acton Road

Chelmsford Center

Cheerleader '46

A. A. Member '44, '45, '46, '47

Senior Dance Committee

*Newsweekly* varitypist—can't wait for graduation—bowling enthusiast—quiet and reserved—for him!—fondness for high heels—amiable companion—still learning to drive.



# JEAN RUSSON

382 East Merrimack Street

Lowell

Junior Red Cross '45, '46, '47, '48

A. A. Member '45, '46

Skating enthusiast—"May I have a bus slip, Mr. Burns?"—Lowell lovely—Saturday night movie—always neat, polite, and unobtrusive—aspires to be a hairdresser.







### SYBIL SARGENT

42 Central Square

Chelmsford Center

A. A. Member '45, '46, '47 Junior Red Cross '45, '46, '47, '48  
Glee Club Concerts '45, '46, '47, '48 Intramural Basketball '45, '46, '47  
Christmas Party Committee

Does so enjoy gym—full of pep—sports enthusiast—choir director  
—neat page-boy—hoopster and booster for her church—adds life to  
the Glee Club—cheery outlook—sweet personality.



### DAWN GLORIA SCRIZZI

197 Groton Road

North Chelmsford

Honor Rank A. A. Member '45, '46  
Latin Club '46 Graduation and Reception Usher '48  
Senior Dance Committee Class Motto Committee  
Junior Red Cross '45, '46, '47, '48 Junior Dance Committee

Head of the line in gym—pursues studies with enthusiasm—front  
seat at television contest—varied coiffures—sincere ways and generous  
spirit—a good friend.



### NANCY PRISCILLA SHEA

118 Boston Road

Chelmsford Center

Honor Rank Latin Club '46  
Junior Dance Committee Graduation and Reception Usher '48  
Senior Dance Committee Intramural Basketball '48  
Senior Play Graduation Decoration Committee  
A. A. Member '46, '47, '48 Junior Red Cross '46, '47, '48, '49

Initiated short hair style—serene and petite—never without that  
Latin book—wears her socks “rolled up”—accomplishes much—the pal  
Betsy is unseparable from!



### THOMAS STEWART SHEDD

75 Carlisle Street

East Chelmsford

Senior Dance Committee

Woody Woodshed—resorts to Forge Village nightly—blushing  
agriculturalist—devoted to brother—has the corner in Room 20—  
steady customer at Old Timers' Dances—takes the best care of Prince  
—nice lad.



## JOHN JAMES SPANOS

125 Parker Road

Chelmsford Center

Football '47, '48

Basketball '49

Baseball '47

Junior Red Cross

A. A. Member '45, '46

Senior Dance Committee

Kouch—allergic to open windows—Charles Atlas of Chelmsford High—loves all sports—knits his own sweaters (?)—wonderful personality—Room 20's Man of the Year.



## GUY CHARLES STAVELEY, Jr.

27 Jordan Street

West Chelmsford

Football '46, '47

A. A. Member '46

Junior Red Cross '47

Glee Club Concerts '46, '47

"Skip"—West Chelmsford gallant—flashy taste in ties and socks—accomplished singer and violinist—a feady laugh—wealth of friends—hopes to look well in a sailor suit—real gentleman.



## PATRICIA ANN SWEET

12 Highland Avenue

North Chelmsford

Basketball '47, '48, '49

A. A. Member '45, '46, '47, '48

Junior Dance Committee

Senior Christmas Party

Senior Dance Committee

Born athlete—familiar figure in the backcourt, arms akimbo—con-capper at Kydd's—favorite form of discourses, argumentation—scores of friends—easy to like.



## FAY LOUISE VALENTINE

9 Newfield Street

North Chelmsford

Cheerleader Co-Capt. '47, '48

Social Events Committee

A. A. Member '46

Junior Dance Committee

Senior Dance Committee

Christmas Party

Intramural Basketball '47

Glee Club Concert Usher '47, '48

Band Concert Usher, '47, '48

Slim, trim, and sophisticated—dedicated to the proposition that O period is no time to study—lost without Gail—artistic but dependable—dances and skis with the greatest of ease.







### PAUL FRANCIS VAYO

249 Chelmsford Street

Westlands

Intramural Basketball '47, '48

Red Cross '45, '46, '47, '48

Junior Dance Committee

A. A. Member '45

Senior Play Committee

Immature chap—faculty for making funny faces—ear to ear grin—taxi service for voters—mischief in the making—double trouble—may years develop his latent talents.



### GEORGE RICHARD WELCH, Jr.

1 Cottage Row

North Chelmsford

Football '48

A. A. Member '45, '47

Junior Red Cross '46, '47, '48

Senior Social Committee

Dick—enthusiastic collector of rulers—enjoys scenery from vantage point behind study hall piano—terrible tease—(with volume)—“Any notices, Miss Scoboria?”—a quiet riot—Mrs. Carriel’s pride and joy.



### ELIZABETH ANN WILDER

10 Warren Avenue

Chelmsford Center

Honor Rank

Glee Club '47, '48, '49

Glee Club Concerts '47, '48, '49

Basketball '47

Graduation and Reception Usher '48

Cheer Leader '48

Junior Red Cross '46, '47, '48, '49

A. A. Member '45, '46, '47, '48

Senior Dance Committee

“Skippy”—many admirers—piquant, pretty, and pleasant—summers at Baptist Pond—beautiful hair—rides about in a convertible—plays basketball for church—eases Sunday school teacher shortage—promising future.



### RAYMOND EDWARD WILLIAMS

140 Steadman Street

Westlands

Basketball '49

Senior Dance Committee

Junior Red Cross '46

Speedy—those long walks to school—fast basketball player—chemistry experimenter—loves to take an opposite point of view—seen at many social activities—Oh, Sheila!



### CHARLES EATON WRIGHT

22 Riverneck Road

East Chelmsford

Football '48

Basketball '49

Yearbook Staff

Class Motto Committee

Ring Committee

Christmas Play '48

"Gismo"—punster?—whiz in most classes—"What! No bus for East!"—ever-ready smile—good sport—"have ya heard this one?"—likes and plays most sports—swell guy to have around.



### ALVA LUCY YOUNG

25 Wright Street

North Chelmsford

Junior Red Cross '45, '46, '47, '48

Glee Club '46, '47, '48

Class Ring Committee

Senior Play

Senior Christmas Party

Senior Dance Committee

Glee Club Concerts '46, '47, '48

Thanksgiving Assembly '46

A. A. Member '45, '46

Future schoolmarm—sure of her convictions—history shark—hides her conscientiousness with her genial disposition—everything depends on French—often changes her mind like the lady she is.



### EUGENE WULTOLD ZABIEREK

199 Riverneck Road

East Chelmsford

A. A. Member '46, '47

Junior Red Cross '46, '47, '48, '49

Often seen in Forge Village and Graniteville—Rosie—greets the public at Strick's—back seat entertainer on the East bus—hobby, farming—the big two, Paul and Gene—drives an antique.



### PAUL JOHN ZOUZAS

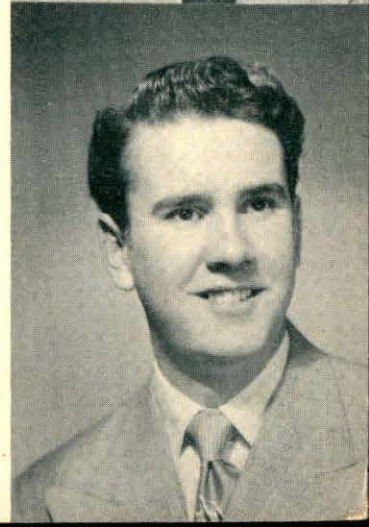
142 Proctor Road

South Chelmsford

Baseball '46, '47

Junior Red Cross '47

Last but not least—neat dresser—Toni home permanent—walking answer book in period 5—still water—quiet and gentlemanly—humor lurks within—expressive eyes—calmly faces the tomorrow.



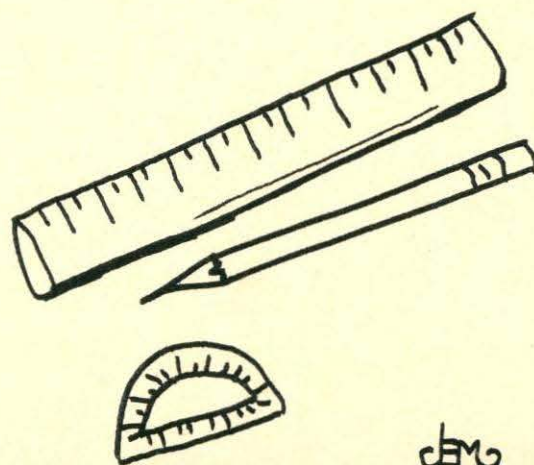
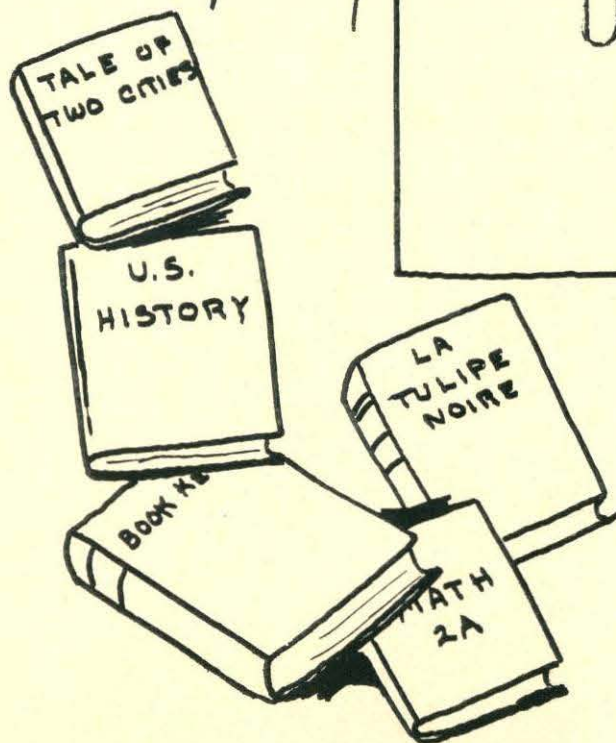








## Undergraduates







## Class of 1950

President ..... Richard Burne  
 Vice-President ..... Philip Burne  
 Secretary ..... Sally Petterson  
 Treasurer ..... Jacqueline Sidelinger

Abrahamson, Jane	Dale, Joan	L'Ecuyer, Elmer	Reeves, Evelyn
Adams, Janet	DiRuzza, Clara	Lovering, Dorothy	Reis, Allan
Avila, Louise	Donovan, Dana	Lovering, Priscilla	Rose, Edna
Bailey, Joyce	Edwards, John	MacDonald, Ruby	Sanderson, Jean
Barron, George	Eliason, Donald	MacElroy, Robert	Shawcross, Gail
Bartlett, Virginia	Elwood, Robert	Malloy, Malcolm	Sherman, William
Bomil, Janet	Emanouil, Georgia	McHugh, Richard	Simpson, Dorothea
Bonura, John	Fitts, Peter	Molloy, Barbara	Simpson, Jaqueline
Bovill, Barbara	Forest, Norman	Moore, Loretta	Smith, Robert
Brooks, Lois	Gaudette, James	Moss, Mildred	Spinazola, Mary
Brown, Evelyn	Gervais, Alexander	Noel, Irene	Talty, Ronald
Burton, Lorna	Gervais, Jean	O'Boyle, Richard	Tansey, James
Burton, Sylvia	Guerrero, Joan	Oliver, Vincent	Ullom, Marilyn
Burt, Carolyn	Hildreth, Nancy	Parker, Lester	Warren, Martha
Carlson, Edward	Howard, Richard	Parkhurst, Wendell	Waterman, Shirley
Chagnon, William	Howard, Robert	Pedersen, Shirley	Watt, Marilyn
Clark, David	Johnson, Edla	Pelletier, George	White, Robert
Cochrane, Beverly	Kerrigan, James	Pickard, Donald	Wright, Florence
Costello, John	Kilburn, Barbara	Poland, Janice	Yates, Stuart
Croft, Joan	Lakin, Marjorie	Pomeroy, Connie	Zaher, Charles
Daigle, Dorothy	Leaver, Richard	Proulx, Roger	Zouzas, Elizabeth



## *Class of 1951*

Adams, Ralph	Jones, Barbara
Ayotte, Claire	Kydd, Robert
Ayotte, Lucille	Leaver, Donna
Bailey, Ruth	LeBrun, Florence
Ballinger, Anne	Lurvey, Ralph
Bell, Roberta	Mackey, Charles
Bell, Thomas	Mainville, Omer
Bernard, Lorraine	Mann, Isabelle
Bicknell, Roger	Manseau, Thomas
Bishop, Robert	Marchand, Omer
Blackie, Anne	Marcotte, Estelle
Bomil, Betty	McCaffrey, Jean
Branch, Carol	Merrill, David
Brodeur, Henry	Murphy, Robert
Burke, Nancy	Oates, Carole
Carbonneau, Cecile	Osborn, Carol
Carlson, Raymond	Ouellette, Joseph
Carruthers, Robert	Peckham, Fenner
Cody, Blanche	Peverill, Dorothy
Corfield, Frederick	Pickard, Ann
Coughlin, Margaret	Pickard, Ronald
Cummings, Connie	Pihl, Daniel
Curran, Alice	Pivrotto, Richard
Davis, Richard	Proulx, Shirley
DeSilvio, Louis	Reynolds, Sheila
Dinnigan, Charlotte	Russell, Richard
Dulgarian, Stephen	Shepherd, George
Duffy, Edward	Shuhany, Andrew
Elwood, Ronald	Stott, George
Emanouil, Timothy	Suich, Peter
Farrington, Dorcas	Sweet, Janet
Flavell, Eileen	Taylor, Milton
Geary, Nancy	Tibbetts, Charlotte
Gray, Wayne	Toms, Patricia
Grondine, Theresa	Valentine, Albert
Haberman, Allan	Vennard, Elizabeth
Hamel, Joan	Vennard, Thomas
Hardy, Raymond	Vinal, Harold
Harrington, Kathleen	Wallis, Thelma
Hatch, George	Warren, Fred
Henderson, Joan	Wheeler, Doris
Henderson, Mable	Wyman, Eleanor
Hicks, William	Yoachimciuk, William
Hoyle, Richard	Ziamba, Florence
Hoyt, Eleanor	



## *Class of 1952*

Adams, Julia	Kemp, Norine
Arseneault, Margaret	LaCourse, Leo
Bancroft, Beverly	Lamprey, Philip
Baron, David	LaPointe, Roger
Bicknell, Janet	Larson, Mary
Bleau, Arthur	Laughton, Judith
Blondin, Helen	L'Ecuyer, Joan
Blott, Shirley	Linnell, Helen
Bourbeau, Shirley	Linstad, Louise
Brown, Janet	Littlefield, Gail
Brown, Paul	Luke, Nancy
Callahan, Donald	Lurvey, Nancy
Calvetti, Norma	MacDonald, Priscilla
Carkin, Bruce	MacElroy, Kathleen
Carrigg, Donald	Manseau, William
Carter, Arthur	McCrady, Robert
Chambers, Donald	McEnany, Regis
Clement, Robert	Mello, Allen
Coates, Donald	Miller, Lorraine
Colby, Sylvia	Miner, Edward
Crowley, Ruth	Miner, James
DePalma, Leonard	Morgan, Louise
DeWolf, Brenton	Morrow, Anne
Dickinson, William	Mountain, Richard
Dryden, Judith	Murphy, Joan
Durkee, Robert	Nebes, William
Edwards, Charles	Normandin, Claude
Egan, Mary	O'Neill, Michael
Enis, Martin	Parkhurst, Richard
Eno, Raymond	Peverill, Laura
Ferron, Robert	Phelps, Judith
Fitzpatrick, Ronald	Pontefract, Laura
Foster, Joan	Reis, Carolyn
Fox, Carolyn	Roach, Ronald
Gadbois, Roland	Robertson, Jean
Gagnon, James	Rollins, Donald
Gaudette, Joan	Rose, Myrtle
Gilbride, Robert	Schult, Victor
Giras, Theodore	Simm, Carole
Greenwood, Nancy	Simpson, Joan
Grondine, Dorothy	Sousa, Michael
Guerrero, Richard	Stanton, Carol
Haberman, Richard	Sullivan, Robert
Hand, Evelyn	Supple, Jean
Harper, Richard	Talty, Anita-Joan
Hartley, William	Thibault, Wilfred
Hosmer, Elinor	Ullom, Priscilla
Howard, Phyllis	Wainwright, Albert
Hunt, Mary	Werner, Robert
Hyson, Gary	Whitesides, John
Kelley, Harold	Valentine, Joanne



## *Special Awards*

### CLASS OF 1948

The following is a list of the special awards presented at the graduation exercises, June 23, 1948. Inasmuch as these awards were not made until the night of graduation, it was impossible to record them in the 1948 Yearbook.

#### AWARDS:

*Boys' State*—A week at Massachusetts State College at Amherst — given by the American Legion, Post 212, to the highest ranking boy in the Junior class — awarded to CHARLES EATON WRIGHT.

*The Harvard Club Book*—"The Practical Cogitator" selected and edited by Charles P. Curtis, Jr. and Ferris Greenslat — given by the Harvard Club of Boston to that boy in the college preparatory course of the Junior class for high scholarship and character — awarded to JAMES CHANDLER BUZZELL, JR.

*Reader's Digest*—A complimentary subscription to the Reader's Digest for one year to the Valedictorian of the Class of 1948 — JOAN ALICE HARTLEY.

*Washington and Franklin Medal Award*—Presented by the Massachusetts Society of the Sons of the American Revolution given for excellence in the study of United States History as determined by Competitive examination — awarded to DANIEL WILLIAM DEXTER, JR.

*Good Citizenship Certificate*—Presented by the Daughters of the American Revolution for outstanding qualities of dependability, leadership, service and patriotism — awarded to JOAN ALICE HARTLEY.



*English Prize*—A purse of \$25 given by the North Chelmsford Parent-Teachers Association for excellence in the study of English as determined by competitive examination — awarded to ELEANOR ANNE DEGUISE.

*Dunigan Award*—Given by the Chelmsford Teachers' Organization in loving memory of Hilda B. Dunigan, who taught in Chelmsford High School from 1928 to 1934, for excellence in shorthand and typewriting as determined by competitive examination — awarded to ELEANOR DAISY BROWN.

*Gay Award*—Given by the Chelmsford Teachers' Organization in loving memory of Dorothy F. Gay, who taught in Chelmsford High School from 1932 to 1934, for excellence in French as determined by competitive examination — awarded to JOSEPH ROBERT McDONALD.

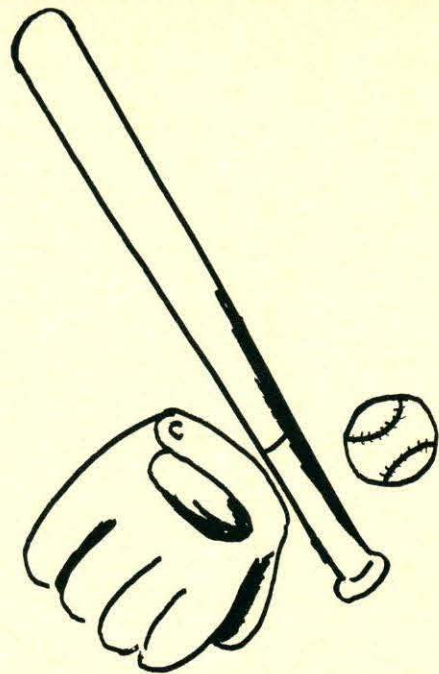
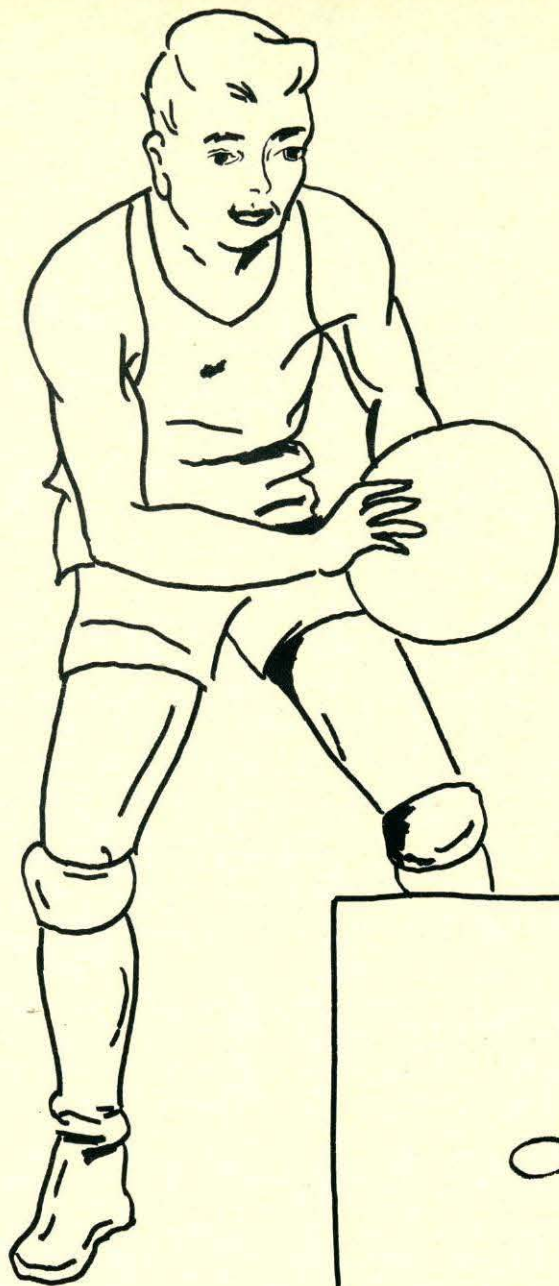
*Fogg Award*—Given by the Chelmsford Teachers' Organization in loving memory of Donald H. Fogg, who taught in Chelmsford High School from 1940 to 1943, to the highest ranking senior girl who has earned a letter in major sports — awarded to BARBARA ANN WYLIE.

*Knightly Award*—Given by the Chelmsford Teachers' Organization in loving memory of George R. Knightly, who was a teacher and coach in Chelmsford High School from 1930 to 1943, to the highest ranking senior boy who has earned a letter in major sports — awarded to THEODORE ALVARD OLSSON, JR.

*Plaque for Field Day*—Awarded to the Senior Class as high school champions by the Chelmsford Lions Club.

*Bausch & Lomb*—Honorary Science Award for exceptional progress in science studies — awarded to DANIEL WILLIAM DEXTER, JR.





Athletics







## *Cheerleaders*

Under the energetic and stimulating direction of Miss Mildred Hehir, the Chelmsford High School Cheerleaders have brought to a fine conclusion a most noteworthy year. Our three teams under the leadership of Captain Janet Bomil and sub-captains Gail Shawcross and Barbara Bovill, were a colorful and inspiring sight at all the football and basketball games, where they entertained the crowds during the halves with their letter formation, pyramids, and locomotives.

The three leaders appeared in uniforms of red velvet, the six tumblers in black slacks with red velvet tops, and the remaining members in black velvet uniforms. They presented a picture of precision and team spirit, and drab indeed would have been the athletic competition had it not been for this animated team which enlivened and stimulated both spectators and players.

At the close of the basketball season, the Chelmsford High School Cheerleaders were invited to the Littleton Tournament, where the eight participants won the championship in competition with fifteen other schools, thereby establishing themselves as the championship team this year in Chelmsford High School. They were judged in precision, pep, and appearance, and offered in competition their Locomotive, C-H-E-L-M-S-F-O-R-D and F-I-G-H-T cheers. Each girl was awarded a tiny gold megaphone. In tournament competition Chelmsford Cheerleaders have won one honorable mention and two championships in three years.





## *Football*

After getting off to a slow start by losing to Maynard and Punchard 13-0 and 20-0 respectively, the Chelmsford High School football squad came home to beat Johnson 18-6. This, our first win in three years, was followed by a victory over Tewksbury. This game featured two McHugh to Hayward passes, both good for touchdowns, and the final score was Chelmsford 12, Tewksbury 0. Without the services of quarterback Warren McHugh, we were beaten by last year's suburban champs, Dracut, 6-0. A strong Pinkerton team from New Hampshire outscored us 21-8. Two unbeaten teams then took us. The first game was a thriller, in which Weston won by a point after touchdown, 14-13. The second game was against Concord, and the Chelmsford boys played very good ball in the first half, holding their opponents to only one touchdown; in the second half Concord's power was unleashed, however, and they went on to get a lopsided 26-0 verdict. Howe, as usual, was the foe on Thanksgiving day, and when the dust of battle cleared, they were on top with a 28-14 score.

The Class of 1949 wishes Coaches Nolan and Callagy, the two captains, Jim Kerrigan and Allan Reis, and their squad lots of luck next year. We have started the way to championship with two successes; win them all next year, boys!

The scores:

OPPONENT		CHELMSFORD	
Maynard	12	Chelmsford	0
Punchard	20	Chelmsford	0
Johnson	6	Chelmsford	18
Tewksbury	0	Chelmsford	13
Dracut	6	Chelmsford	0
Pinkerton	19	Chelmsford	8
Weston	14	Chelmsford	13
Concord	26	Chelmsford	0
Howe	28	Chelmsford	14





## *Girls' Basketball*

As winter set in, the girls' basketball team was called out once more under the guidance of Miss Margaret E. Keith. Sparked by co-captains, Maureen Bishop and Connie Greenwood, along with sharpshooter, Joyce Dryden, in the forward court, and backed by a grand supply of competent guards, we all looked forward to a truly auspicious season.

Only our friendly rivals from Howe High managed to blemish our league record, although our final game with the Tewksbury sextet resulted in a stalemate. The competition ended with our team holding a firm second place in the Suburban League.

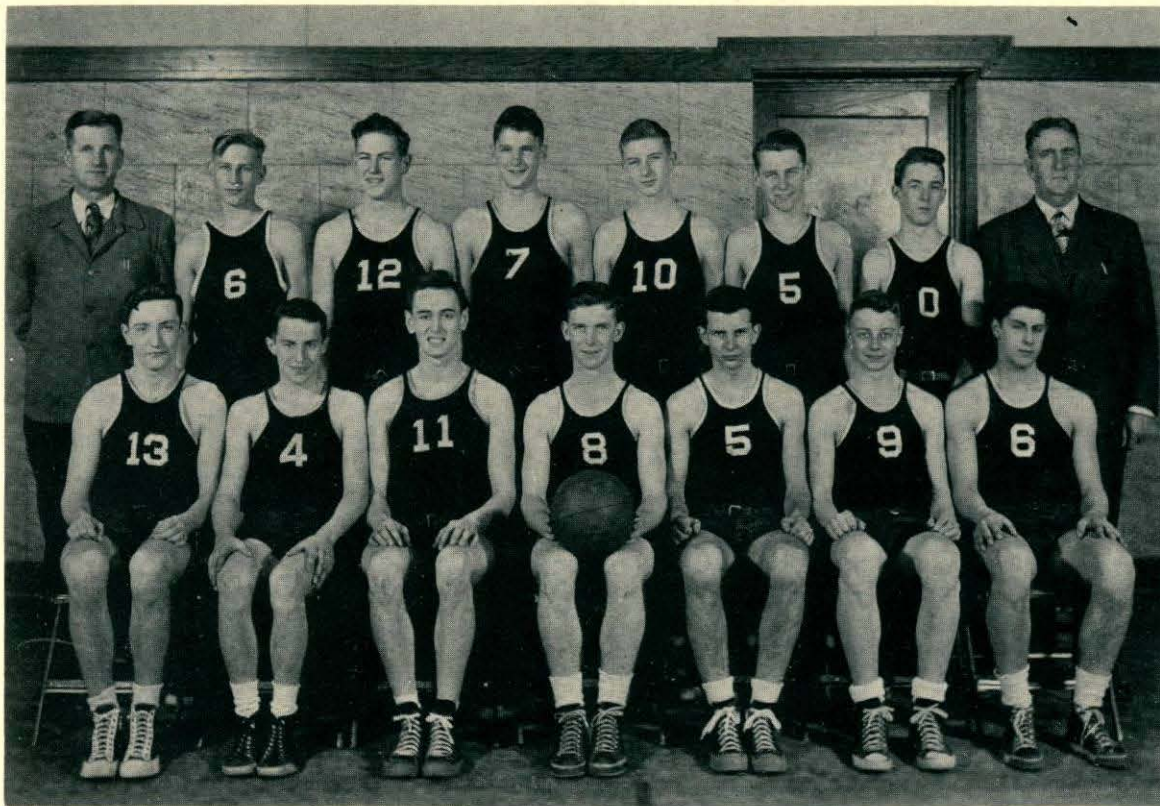
Again we entered the Littleton tournament and by defeating Ayer and then Acton, found ourselves participants in the semi-finals. All our hopes faded, however, when we faced a strong Pepperell team, and thus ended our basketball career at Chelmsford High School.

May next year's team, under the newly elected captain, Evelyn Reeves, win the first place we just missed and rank first in the Suburban League!

### SCORES

Chelmsford	10	Concord	23	Chelmsford	28	Burlington	16
Chelmsford	18	Alumnae	23	Chelmsford	23	Johnson	11
Chelmsford	29	Concord	25	Chelmsford	19	Tewksbury	19
Chelmsford	30	Maynard	10	<i>Tournament</i>			
Chelmsford	25	Tewksbury	18	Chelmsford	36	Ayer	24
Chelmsford	24	Dracut	10	Chelmsford	39	Acton	21
Chelmsford	22	Howe	27	Chelmsford	24	Pepperell	37
Chelmsford	24	Burlington	8	<i>Second Team</i>			
Chelmsford	23	Howe	28	Chelmsford	12	Concord	13
Chelmsford	19	Dracut	9	Chelmsford	7	Concord	27





## *Boys' Basketball*

The Chelmsford High School Basketball team turned in an excellent record this year. Including tournament play, 15 out of 20 games were victories. In the Suburban League they were tied with Dracut for first place, and were runners-up in the Small Schools' Tournament.

Two games were lost to a strong Punchard team; the games at the home courts of Concord and Dracut were dropped; and in the finals of the Small Schools' Tournament in the B division, Our Lady gained a victory over C. H. S. by a five-point margin. In the Townsend Tournament it was necessary to forfeit a game to Westford because of conflicting dates, and the team was eliminated.

Warren McHugh, the '49 captain, Marshall, Hayward, Wright, Spanos, and Williams will leave the squad this year, but the starting forwards, Carruthers and Kydd, the '50 captain, will be back, along with R. McHugh, MacElroy, Reis, Hicks, and Lurvey. Several members of the Junior Varsity, including Davis, Taylor, Hoyle, and Bicknell, look promising and will probably fill out next year's squad.

### SCORES

Chelmsford	30	Alumni	29	Chelmsford	39	Howe	28
Chelmsford	36	Concord	57	Chelmsford	30	Dracut	40
Chelmsford	37	Concord	29	Chelmsford	45	Burlington	26
Chelmsford	28	Maynard	21	Chelmsford	41	Johnson	30
Chelmsford	43	Tewksbury	17	Chelmsford	65	Tewksbury	25
Chelmsford	41	Punchard	59	<i>Small School Tournament</i>			
Chelmsford	40	Dracut	31	Chelmsford	42	Maynard	23
Chelmsford	50	Howe	15	Chelmsford	38	Concord	33
Chelmsford	31	Johnson	29	Chelmsford	28	Our Lady	33
Chelmsford	41	Burlington	28	<i>Townsend Tournament</i>			
Chelmsford	27	Punchard	69	Chelmsford	53	Ayer	42







## *Athletic Awards*

The following students were given awards:

### *Baseball (1948 team)*

Axon, Gordon, Capt.  
Ouellette, Victor, Mgr.  
Bishop, Edward  
Campbell, John  
Carruthers, Robert  
Kerrigan, James  
MacElroy, Douglas  
Marchand, Omer  
Pickard, Donald  
Taylor, Milton  
Tousignant, William  
Reid, William  
Yoachimciuk, William

### *Football*

Campbell, John, Capt.  
Parker, Lester, Mgr.  
Sousa, Michael, Mgr.  
Bishop, Edward  
Buonopane, Edward  
Burne, Richard  
Buzzell, James  
Chagnon, William  
Fitts, Peter  
Guiney, John  
Hayward, Richard  
Hoyle, Richard  
Kerrigan, James  
Kydd, Robert  
Marshall, John  
McHugh, Warren  
Oliver, Vincent  
Pelletier, George  
Pickard, Donald

Reid, Donald  
Reis, Allan  
Tansey, James  
Warren, Fred  
Welch, George  
Wright, Charles  
Yates, Stuart

### *Boys' Basketball*

McHugh, Warren Capt.  
Yates, Stuart, Mgr.  
Carruthers, Robert  
Hayward, Richard  
Hicks, William  
Kydd, Robert  
Lurvey, Ralph  
MacElroy, Robert  
Marshall, John  
McHugh, Richard  
Reis, Allan  
Spanos, John  
Williams, Raymond  
Wright, Charles

### *Girls' Basketball*

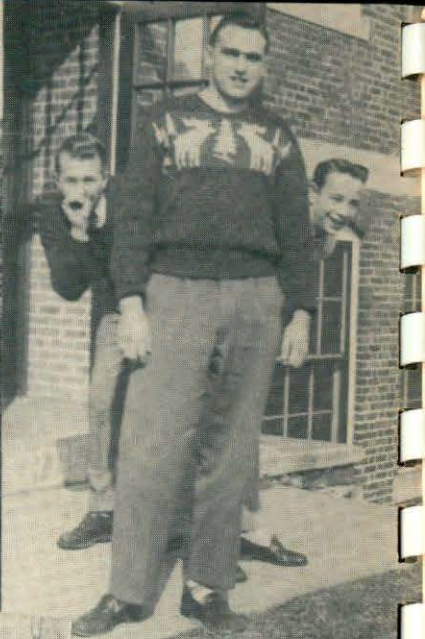
Bishop, Maureen, Co-Capt.  
Greenwood, Constance, Co-Capt.  
Jenkins, Margaret, Mgr.  
Mann, Joyce, Mgr.  
Adams, Doris  
Barrows, Barbara  
Blackie, Ann  
Blott, Margaret  
Clough, Marilyn  
Dryden, Joyce  
Dryden, Judith

Lamb, Nancy  
Mann, Isabelle  
Reeves, Evelyn  
Sweet, Janet  
Sweet, Patricia  
Wright, Florence

### *Cheerleaders*

Bomil, Janet, Capt.  
Bovill, Barbara, Sub-Capt.  
Shawcross, Gail, Sub-Capt.  
Ayotte, Dorothy, Mascot  
Ayotte, Lucille  
Carr, Marjorie  
Cochrane, Beverly  
Cole, Muriel  
Curtis, Nancy  
Dinnigan, Charlotte  
Flavell, Eileen  
Gervais, Jean  
Greenwood, Nancy  
Hosmer, Elinor  
Jones, Barbara  
L'Ecuyer, Joan  
Leo, Concetta  
Littlefield, Gail  
Marcotte, Estelle  
McCaffrey, Jean  
Mills, Ann  
Phelps, Judith  
Pickard, Louise  
Reynolds, Sheila  
Tibbetts, Charlotte  
Toms, Patricia  
Wilder, Elizabeth

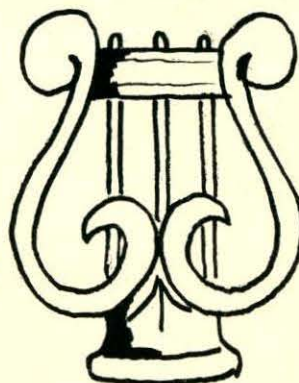








# Activities







## *Band*

We have good reason to be proud of our Chelmsford High School Band. It is not only a school band, but it is also a community project, and its success is due to the high spirit of Bernie Larkin and to the cooperative effort of the individual members. Without this happy collaboration the Chelmsford band, as we know it, could not exist.

A very colorful group of drum-majorettes, under the direction of Mr. Larkin, assisted by Janet Adams and Connie Pomeroy, was an additional feature of our band this year. Performing at several of the football games, garbed in red and white, they lent moral support to the players, and a note of gaiety and pageantry to all occasions.

The band added to the enjoyment of most high school activities. It was an inspiration at every home football game, including the Alumni game between Howe and Chelmsford. It presented a half hour concert on Sports Night. In addition it was present at most assemblies, and it high-lighted our graduation exercises in June.

In our own immediate community and in broader community life, the band gave evidence of its loyalty. It marched in the Memorial Day parade and shared in the town exercises. It made its third annual appearance at Hollis, New Hampshire, on the afternoon of the same day, where it joined the Hollis band in parading, presenting a concert, and sharing in the annual outing at Levens Farm. Participation in the opening drive for the Billerica High School Athletic Field fund was another of the band's good neighbor acts, and in October our boosters took part in the C. Y. O. parade in Boston. In December all known shut-ins in every section of the town were remembered with Christ-





## *Majorettes*

mas carols played for them at their doors. We think it was a kind and appropriate gesture on the part of some of the parents of the band members to entertain the band at a Christmas Party later that same day.

Although school ended last June, "the band played on." During the summer our music makers gave a series of concerts. Their performances gave pleasure to large groups of music lovers on the following occasions: St. John's Carnival at North Chelmsford, "Jimmy Fund Concert" at Chelmsford Center, St. Mary's Lawn Party at the Center, Lawn Party at South, Lawn Party at West, Community Concert at the Westlands, and the Congregational Church Lawn Party at North. Two other summer concerts were played for the purpose of raising money to defray the band's financial obligations and to pay for the capes they proudly displayed in the fall. The total cost of these capes was \$671.60, toward which the Lions Club generously donated \$345.00. These concerts were sponsored by the Lion's Club of the town, to whom we are grateful for this evidence of their fine civic pride.

Our band is progressive too! Not only did it buy new capes, but on January first of this year it added a new bass horn, which cost \$450.00. The case which was purchased for this horn cost \$120.

We are glad to have such a school activity for our musically gifted members, because we believe it serves a two-fold purpose; it affords us pleasure and profit, and it suggests to us opportunities to serve our school and town.





## *Glee Club*

Under the able direction of Miss Olive Littlehale, the Glee Club has had a most enjoyable year. In December a concert was presented with shadow pictures illustrating the Christmas story. Music appreciation was encouraged by Miss Littlehale, who often brought records for our listening enjoyment.

At the first meeting, the following officers were elected:

President, Elizabeth Wilder; Vice-President, Muriel Cole; Secretary, Constance Greenwood.

The members are as follows:

Beverly Bancroft  
Barbara Barrows  
Doris Beausoleil  
Maureen Bishop  
Beverly Cochrane  
Phyllis Colby  
Virginia Crowell  
Ruth Crowley  
Dorothy Daigle  
Phyllis Dupee

Lorraine Gadbois  
Ruth Hamel  
Betty Hardy  
Margaret Jenkins  
Barbara Jones  
Joan L'Ecuyer  
Gail Littlefield  
Kathleen MacElroy  
Priscilla McDonald  
Ann Mills

Ann Morrow  
Phyllis Palmgren  
Louise Peverill  
Connie Pomeroy  
Carolyn Reis  
Sybil Sargent  
Jean Supple  
Shirley Waterman  
Alva Young





## *Junior Red Cross*

Under the able supervision of Miss Scoboria, the Junior Red Cross has completed another year of service. At the first meeting the following officers were elected: President, Nancy Curtis; Vice-President, Carolyn Fox; and Secretary-Treasurer, Marilyn Watt. The homeroom representatives were chosen as follows:

Blackie, Anne  
Blott, Margaret  
Carr, Marjorie  
DePalma, Leonard

Fox, Carolyn  
Gervais, Jean  
Jenkins, Margaret  
Kydd, Robert  
Linnell, Helen

Phelps, Judy  
Pickard, Ronald  
Shawcross, Gail  
Staveley, Doris

During the Red Cross membership drive, these representatives collected \$29.08 with almost every room achieving 100% membership.

The members held twelve meetings during the year, and made two hundred attractive nut cups for Christmas and two hundred more for Valentine's Day. At Christmas time they also made original and decorative menu covers for the Christmas dinners of servicemen overseas. They also made five hundred newspaper disposal bags for hospital use.

The Lowell Red Cross Chapter sent several letters expressing appreciation for the work accomplished during the year.





## *Senior Play – I'll Leave It To You*

With Noel Coward's "I'll Leave It to You," the old custom of a Senior play was revived at Chelmsford High School. Under the excellent coaching of Mrs. Bradford Boothby, two casts were able to present equally fine performances of this light comedy. The use of a double cast allowed more of the class members to participate in the actual dramatics, while capable committees composed of other class members filled equally important capacities behind the scenes. The play was about the Dermott family composed of Mrs. Dermott, the mother; Oliver, the eldest son; Evangeline, the eldest daughter; Bobbie, in love with the wrong girl; Sylvia, the mediator of the family; and Joyce, the child of the family. The roles of Faith, Bobbie's fiancée; and her mother, Mrs. Crombie; Daniel Davis, the supposedly rich uncle, and Griggs, the typical butler complete the cast.





#### FIRST NIGHT'S CAST

Mrs. Dermott .....	Alva Young
Oliver .....	Donald Reid
Bobbie .....	Dick Hayward
Sylvia .....	Marilyn Clough
Evangeline .....	Nancy Shea
Joyce .....	Ann Mills
Mrs. Crombie .....	Maureen Bishop
Faith .....	Nancy Lamb
Daniel Davis .....	James Buzzell
Griggs .....	John Marshall

#### SECOND NIGHT'S CAST

Mrs. Dermott .....	Phyllis Dupee
Oliver .....	Ward Letteney
Bobbie .....	Dick Hayward
Sylvia .....	Doris Staveley
Evangeline .....	Doris Beausoleil
Joyce .....	Phyllis Palmgren
Mrs. Crombie .....	Betty Gannon
Faith .....	Betty Hardy
Daniel Davis .....	James Buzzell
Griggs .....	John Marshall



## *You Just Can't Picture*

Doris Adams without her license.  
Barbara Barrows having her shorthand all done.  
Doris Beausoleil on time in the morning.  
Edward Bishop without an argument.  
Maureen Bishop not liking everybody.  
Margaret Blott hating the boys.  
Edward Buonopane sitting in his seat after lunch.  
James Buzzell without his dry humor.  
John Campbell having pencils of his own.  
Diana Cantwell without her long hair.  
Marjorie Carr without her gift of gab.  
Charles Cashin with an old car.  
Elizabeth Clark not being kidded.  
Marilyn Clough flunking a subject.  
Phyllis Colby without her odd jobs.  
Muriel Cole not raving about DeMolay.  
Virginia Crowell getting along with Jimmy.  
Dorothy Cummings not helping Miss Maynard.  
Christine Curran making a lot of noise.  
Nancy Curtis walking to school without Ann Mills.  
Lincoln Dexter missing lunch.  
Walter Dinnigan seen without either Tommy or Gail.  
Joyce Dryden avoiding Mr. Shannon.  
Phyllis Dupee being out of order.  
Elizabeth Durkee without her woolen socks.  
Claire Dutton not talking about Clayton.  
William Edwards enjoying an assembly.  
Patrick Flynn not explaining radios.  
Lorraine Gadbois seen without Ruthie.  
Elizabeth Gannon not kidding Mr. Shannon.  
Victor Gaudette without the car on week ends.  
Raymond Gibbons mastering English.  
Theresa Gonslaves not being petite.  
Constance Greenwood being unfriendly.  
John Guiney without his brand new *Cadillac*.  
Richard Hadley without his motorcycle.  
Ruth Hamel without that certain smile.  
Elizabeth Hardy with no pretty clothes.  
Marie Hayes not enjoying shorthand.  
Theresa Hayes getting along with Marie.  
Richard Hayward not handing out a line.  
Irene Hulslander with no morning greetings.  
Margaret Jenkins without a problem.  
Chester Kelly getting all A's.  
Nancy Lamb knowing her English.  
Ronald Leach not arguing in English.



## *You Just Can't Picture*

Harold LeBrun not playing the drums.  
Concetta Leo spending a whole period in the typing room.  
Ward Letteney not selling tickets at St. Anne's.  
Clark Lind without his scooter bike.  
Ralph Logan not liking basketball.  
Joyce Mann not being amiable.  
John Marshall without a daily note from Gail.  
Rita McDonald disliking a certain orchestra.  
Warren McHugh running out of jokes.  
Beverly McMaster without a story to tell.  
Arthur Miller not visiting the Center frequently.  
Ann Mills without her bangs.  
William Morgan without his bluffing.  
Barbara Nadeau disliking television.  
Robert Nickles conforming.  
Elsa Nilsson knowing her shorthand.  
Robert Norton without an answer.  
Phyllis Palmgren being impolite.  
Evelyn Petterson not blushing.  
Louise Peverill not playing the piano.  
Roger Pihl without his hair combed.  
Rita Pope without her high heels.  
Donald Reid getting A in English.  
Hazel Rose with her sneakers.  
Jean Russon without her laugh.  
Sybil Sargent sitting still.  
Dawn Scrizzi not seen with Tommy.  
Nancy Shea without style.  
Thomas Shedd without his horse.  
John Spanos not modelling the latest.  
Doris Staveley without her charming smile.  
Guy Staveley not sleeping in class.  
Patricia Sweet missing gym.  
Fay Valentine seen without her father's car.  
Paul Vayo as an adult.  
George Welch out of trouble.  
Elizabeth Wilder not liking dances.  
Raymond Williams with a wave in his hair.  
Charles Wright not liking basketball.  
Alva Young not in a debating mood.  
Eugene Zabierek living in the city.  
Paul Zouzas with straight hair.

BARBARA BARROWS, '49  
VIRGINIA CROWELL, '49



## *Do You Remember?*

Seniors—The mad succession of Corcoran, Wilcox, Stearns, and Watt as English teachers — when our athletes held championships in four sports — Mr. Wilcox's love of giving U's, reading poems, and wearing a little black derby—arrival of Mr. Hicks followed by the arrival of his son John—the Barricade of the boys' basement—the times we had to stand in the corner for Mr. Watt—Pat Pappalardo's famous P. F. I. tests—the visit from Mother Nature's perfume vendor—Mr. Hicks' rendition of "I Had but Fifty Cents"—blasting on the football field—Miss Simpson's arrival and start of girls' physical education—the Cheerleaders' championship—Miss MacBrayne's realistic interpretation of Skylock—Dr. Handy's aptitude tests—the feeble attempt at woman hating week—snowball fights—pennies from heaven in Room 31—every day a different set of periods—"You Sinners!"—the fire crackers before the Fourth—Room 17 paratroopers—Shannon's new car, "Elizabeth"—the spectacular experiments in lab—the false alarm that brought the engines racing up to the school—the "bloody" Junior assembly—when detentions were established—class rings—Mammy and Pappy dance skit—new cafeteria—our *two* Junior dances—Zip, Zip, Zip—the boys' consternation at having a girl president—"Look Maw, we're acting!"—the rambling desk in study hall—another one, Mr. Hicks?—"Home Ownership Under the American Incentive System"—the slogans of Good Government Day candidates—singing Happy Birthday in study 3 1/2—running to lunch—Mr. Campbell's "Stanley Steamer"—"The point I'm trying to make for you is--"—basketball team ties with Dracut for first place—

If we had these days to live over, we'd be lucky.